



GMX100

GAMING MOUSE, 7000DPI



DRIVER



MANUAL

WWW.EVOLVEO.COM

User Manual
Professional Gaming Mouse

BY EVOLVE®



CONTENTS

| | |
|--|----|
| PACKAGE CONTENTS / SYSTEM REQUIREMENTS | 02 |
| GAMING MOUSE LAYOUT | 03 |
| INSTALLING YOUR PTERO GMX100 MOUSE | 04 |
| CONFIGURING YOUR PTERO GMX100 MOUSE | 05 |
| ALTERNATE MOUSE BUTTON | 06 |
| ANTI RECOIL FUNCTION | 07 |
| SENSITIVITY OPTIONS | 08 |

PACKAGE CONTENTS / SYSTEM REQUIREMENTS

PACKAGE CONTENTS

- EVOLVEO Ptero GMX100 Gaming Mouse
- User Manual

SYSTEM REQUIREMENTS

- PC with a free USB 2.0 port
- Windows 10 / Windows 8 / Windows 7 / Windows Vista / Windows XP

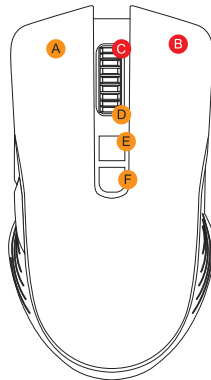
TECHNICAL SUPPORT

- 2 years limited warranty
- Free online technical support at www.evolveo.com
- Driver download from : www.evolveo.com

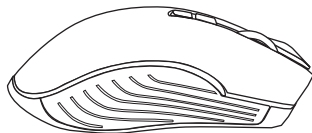
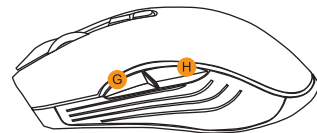
TECHNICAL SPECIFICATIONS

- Customizable ergonomics to fit all hand sizes
- 7000dpi Optical sensor system
- Gold plated connector
- Braided USB cable

GAMING MOUSE LAYOUT



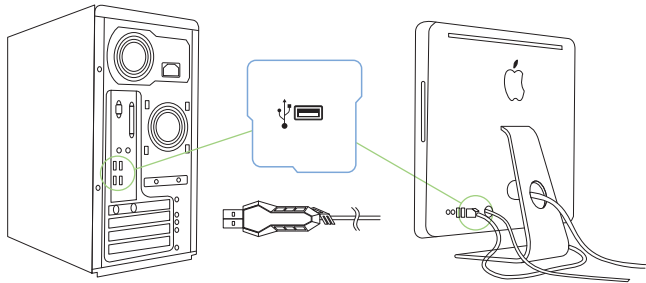
- A. Left Mouse Button
- B. Right Mouse Button
- C. Scroll Up
- D. Scroll Down
- E. Sensitivity Stage Up
- F. Sensitivity Stage Down
- G. Forward
- H. Backward



⚠ Macro Function(Anti Recoil) SWITCH ON/OFF

Hold the scroll **C** wheel & **B** right key for 5 seconds. (Vice versa)
Function is turn ON when the GREEN LIGHT is flashing
Function is turn OFF when the BLUE LIGHT is flashing

INSTALLING YOUR PTERO GMX100

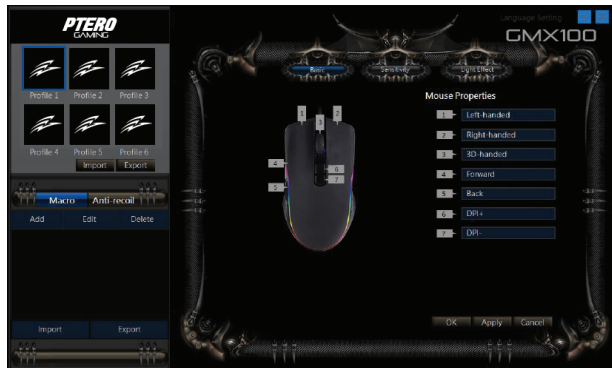


- Step 1: Plug the PTERO GMX100 into the USB port of your computer.
- Step 2: Run the installer and follow the Programme.
- Step 3: Wait until the software automatically downloads and installs.
- Step 4: Open the programme, then set up

CONFIGURING YOUR PTERO GMX100

MOUSE TAB

The Mouse Tab is your default tab when you first install Programme. This tab allows you to customize your device's profiles, button assignments, performance and lighting.

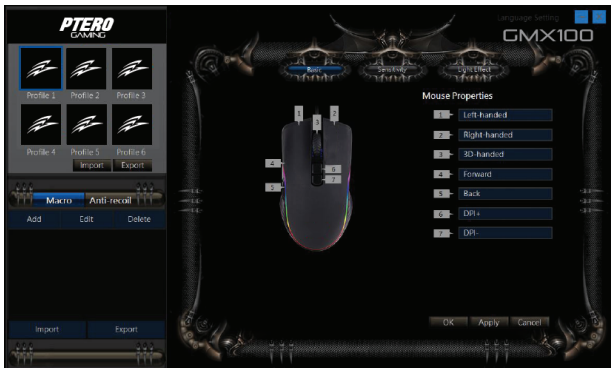


ALTERNATE MOUSE BUTTON

Initially, each of the mouse buttons is set to DEFAULT.

Which you can choose from the Assign Button submenu

- 1 Left Handed
- 2 Right Handed
- 3 3D Handed
- 4 Forward
- 5 Back
- 6 DPI +
- 7 DPI -



ANTI RECOIL FUNCTION

Each of the mouse buttons is set to DEFAULT. However, you may change the function of these buttons by clicking the desired button to access the BUTTON ASSIGNMENT Menu.



SENSITIVITY OPTIONS

Sensitivity pertains to how much effort is needed to move the mouse pointer in any direction. The higher the sensitivity, the more responsive the mouse will be.

1. Select the number of sensitivity stage needed.
2. Click on the stage you would like to preset and adjust using the arrow on the slider below.
3. Click "Apply" when done. To switch between different sensitivity stages, simply assign the Sensitivity Stage Up and Sensitivity Stage Down functions to the desired buttons.



BREATHING LIGHT SETTING

Each of the mouse buttons is set to DEFAULT. However, you may change the function of these buttons by clicking the desired button to access the BUTTON ASSIGNMENT Menu.

